



# Northridge Elementary School Continuous Improvement Plan 2009-2010



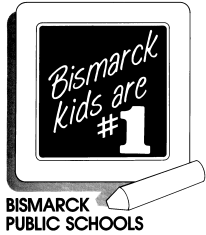
Instruction & Assessment  
Leading to Achievement  
For ALL Students



Inviting and  
Nurturing  
Culture and  
Climate

Positive Working  
and Learning  
Environment

Continuous Improvement Leadership Team  
Bob Olson – Principal  
Linnett Schmidkunz – Assistant Principal



## **Bismarck Public Schools Mission Statement**

“We provide educational opportunities which challenge all students to reach their potential.”



## **Northridge Elementary School Mission Statement**

“We, the staff, parents, and students of Northridge Elementary School accept and share the responsibility for the development of all, who as individuals strive for excellence, become life-long learners, and make positive contributions to our families, school community and society.”

## **Balanced Scorecard Objectives**

As part of the Bismarck Public School District’s “Continuous School Improvement” process, Northridge Elementary is implementing the following objectives from the Balanced Scorecard:

*\*All Levels of the Organization are Accountable for Continuous Improvement in Instruction and Assessment Leading to Achievement for all Students*

*\*Create an Inviting and Nurturing School Culture and Climate*

*\*Promote a Positive Working and Learning Environment*

Northridge Elementary 2009-2010  
 “A Quick Thumbnail Sketch”

Currently at Northridge 715 students are enrolled in 33 grade sections.

Grade	# of Classrms	Boys	Girls	Total Students	Average Class Size
K	5	52	52	104	20.8
1st	5	56	47	103	20.6
2nd	5	60	44	104	20.8
3rd	5	46	60	106	21.2
4th	4	50	43	93	23.25
5th	5	65	41	106	21.2
6th	4	45	54	99	24.75
Totals	33	374	341	715	21.66

Fast School Facts:

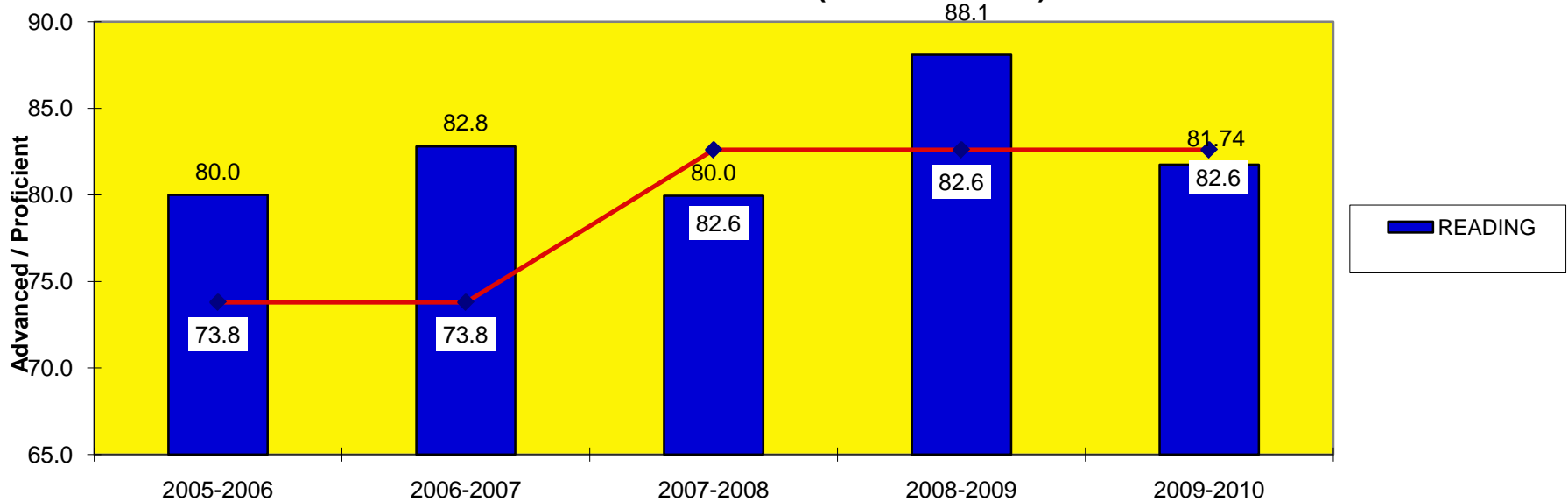
- # of Students on Free and Reduced Lunch:** 18.2%
- Approx. # of Students Receiving Special Education Services:** 10.6%
- Approx. # of Students Receiving Special Reading Services:** 16.6%
- Average Parent/Teacher Conference Rate:** 98%
- Ethnicity of Student Population:** Caucasian: 93.9%, American Indian: 3.2%, African American: 1%, Asian: 0.7%, Hispanic: 1%

# NDSA Reading

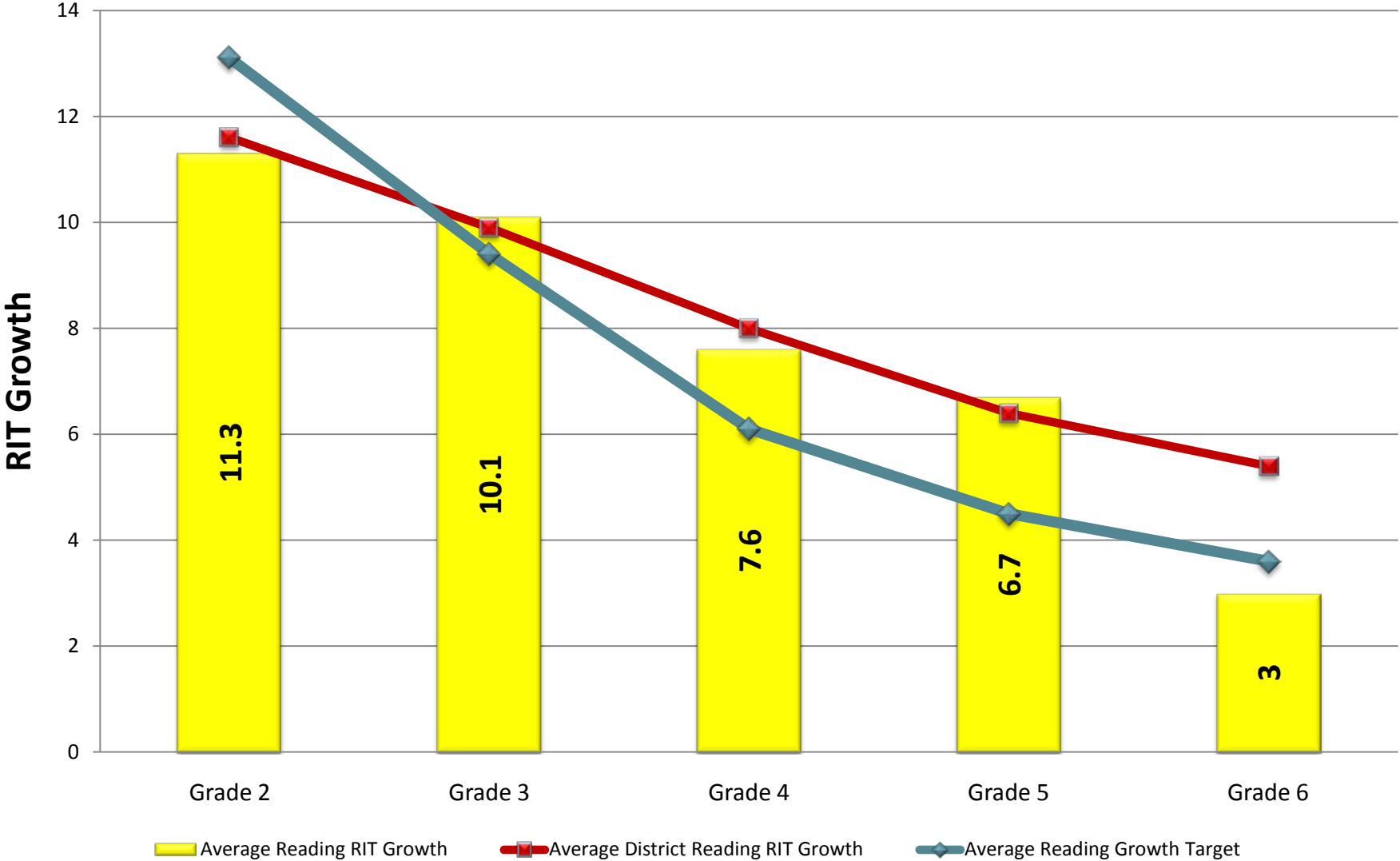
NDSA Reading Percent Proficient (Grade 3)  
 NDSA Reading Percent Proficient (Grade 4)  
 NDSA Reading Percent Proficient (Grade 5)  
 NDSA Reading Percent Proficient (Grade 6)

	Fall 2005-06	Fall 2006-07	Fall 2007-08	Fall 2008-09	08-09 Target	Fall 2009-10
NDSA Reading Percent Proficient (Grade 3)	78%	79%	76%	86%	87%	77%
NDSA Reading Percent Proficient (Grade 4)	81%	90%	85%	90%	87%	82%
NDSA Reading Percent Proficient (Grade 5)	83%	79%	81%	90%	87%	80%
NDSA Reading Percent Proficient (Grade 6)	79%	83%	80%	87%	87%	89%

**PERCENT OF NORTHRIDGE STUDENTS MAKING ADEQUATE YEARLY PROGRESS (AYP)  
 IN READING ON THE NDSA (with Cut Scores)**



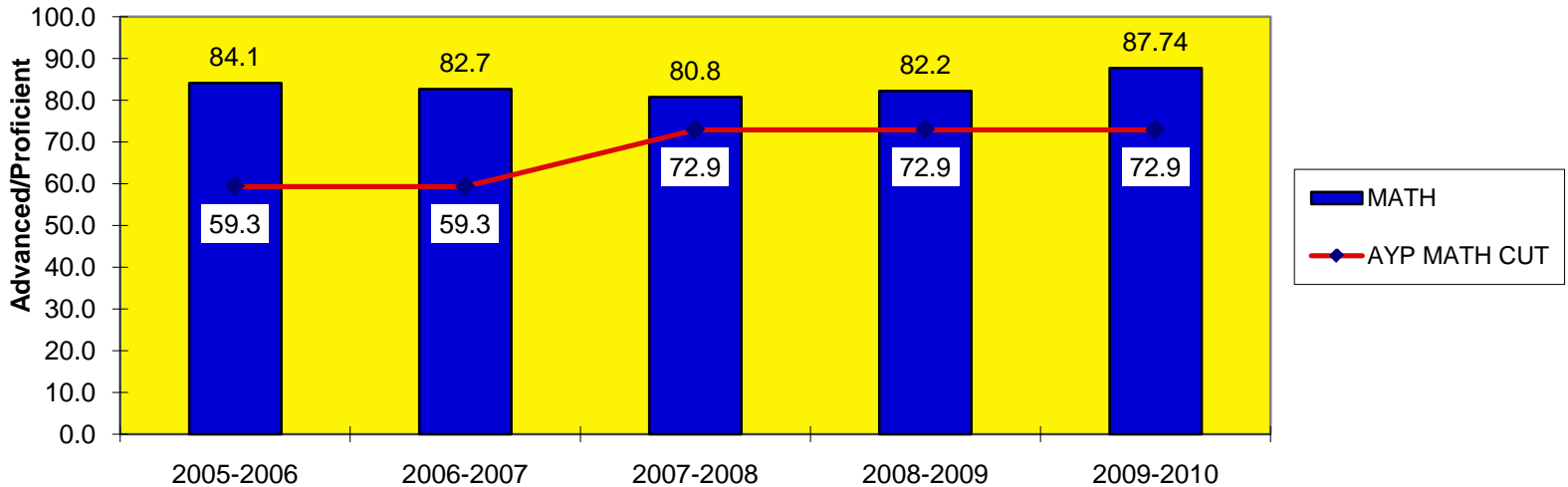
**Student MAP Growth Summary - Reading**  
**Fall 2009 - Spring 2010**  
**Northridge Elementary School**



# NDSA Math Chart

	Fall 2005-06	Fall 2006-07	Fall 2007-08	Fall 2008-09	08-09 Target	Fall 2009-10
NDSA Math Percent Prof (Grade 3)	86%	81%	84%	87%	87%	89%
NDSA Math Percent Prof (Grade 4)	85%	85%	70%	72%	87%	86%
NDSA Math Percent Prof (Grade 5)	74%	78%	86%	88%	87%	88%
NDSA Math Percent Prof (Grade 6)	88%	86%	81%	86%	87%	85%

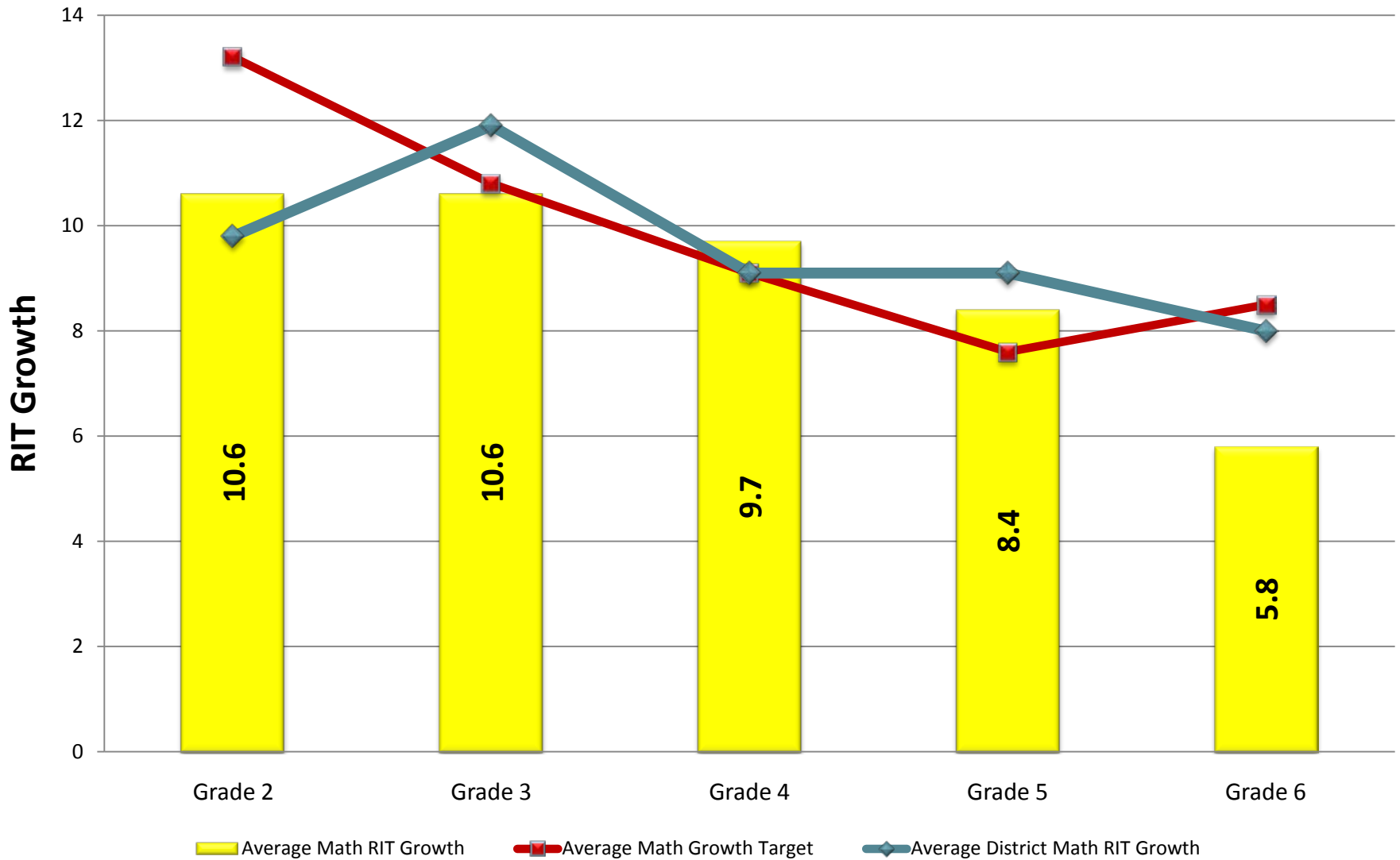
**PERCENT OF NORTHRIDGE STUDENTS MAKING ADEQUATE YEARLY PROGRESS (AYP) IN MATH ON THE NDSA (with Cut Scores)**



# Student MAP Growth Summary - Math

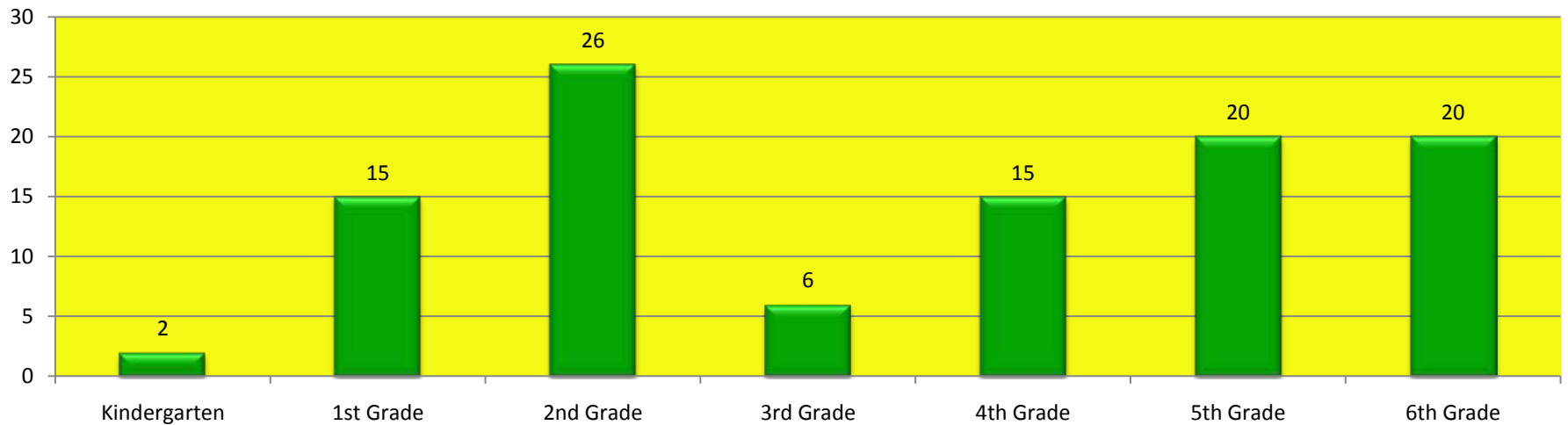
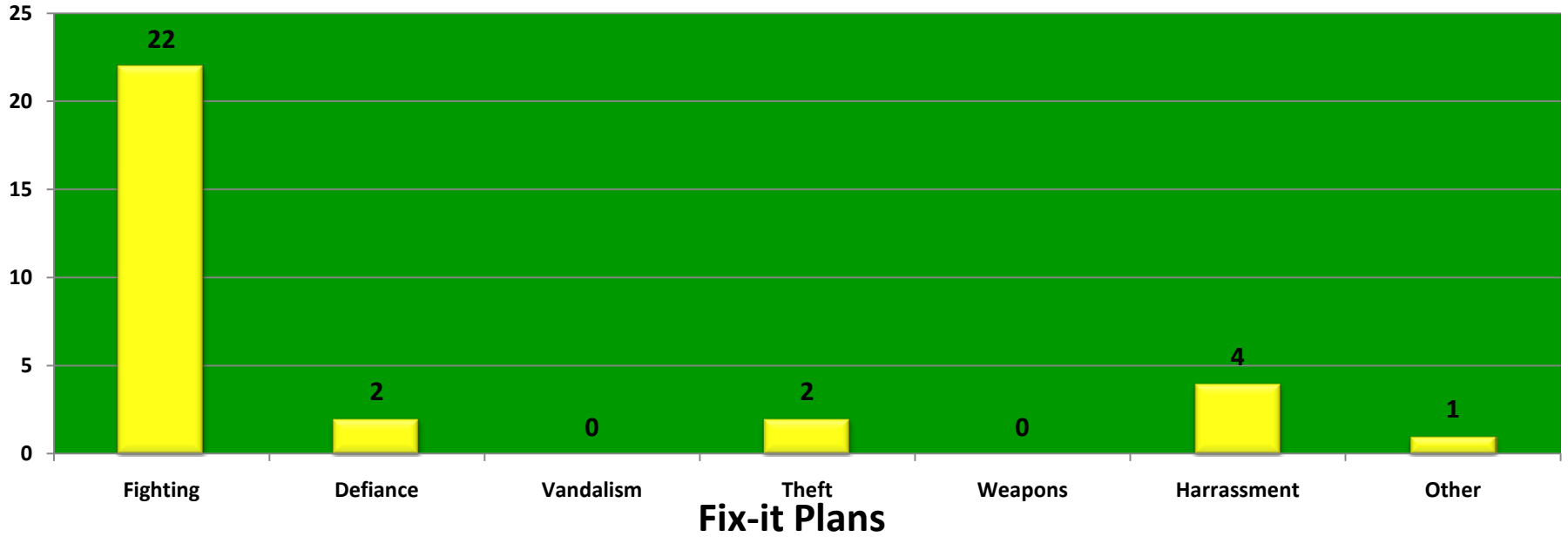
## Fall 2009 - Spring 2010

### Northridge Elementary School



# Behavior and Discipline

## Bottom Lines



# BSC Objectives and Initiatives

## **All Levels of the Organization are Accountable for Continuous Improvement in Instruction and Assessment Leading to Achievement for all Students**

- All 3-6 teachers trained in assisting students at their grade level to set personal goals for MAP testing prior to and upon completion of each MAP testing period
- Implement primary MAP testing grades K-2
- Implement benchmark screening and progress monitoring DIBELS K-6
- Create PLC time to meet on a weekly basis
- Teacher generated PLC meeting agendas - focused on student learning
- Utilize PLC time to access and analyze data
- Create RTI triangles three times a year
- Identify and maintain a student needs list
- Develop intervention plans
- Develop a process to keep intervention fidelity data
- Review and evaluate effectiveness of intervention plans every six weeks

## Objective 2

# Create an Inviting and Nurturing School Culture and Climate

- Distribute Northridge monthly newsletter to residents in our school community
- Distribute a Northridge school brochure to our students, parents, and the greater community at large
- Increase teacher representation in PTO meetings and PTO events
- Engage the Northridge staff, students and parents in community service projects and school spirit activities

# Objective 3

## **Promote a Positive Working and Learning Environment**

- Principal/Assistant Principal will visit each classroom and review the behavior procedures with the students
- Create and send home a school brochure describing Northridge schoolwide behavior procedures
- Develop a bottom line behavior form to monitor and document student behavior
- Develop a Nurses Referral Form to improve communication
- Implement LIFESKILLS and the Lifelong Guidelines schoolwide on a daily and weekly basis

# Highlights and Steps for next yr.

We will:

1. build leadership – We are losing a lot of leadership from NR next year.
2. focus on core reading curriculum.
3. focus on problem solving team and system.
4. re-examine our data after Sunrise students are pulled out.