



2009–2010


Balanced Scorecard

Population

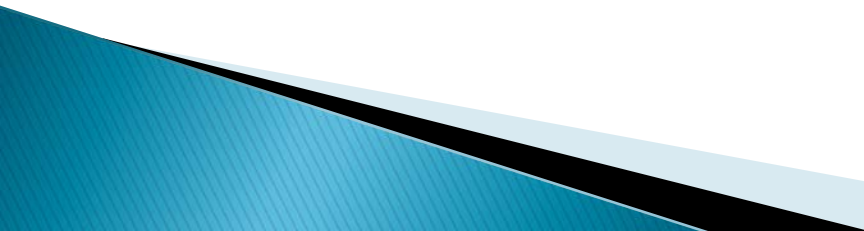
- ▶ 428 students 10, 11, 12
 - BHS, CHS, SCHS, ALC
 - St. Mary's, Shiloh, MHS,
 - Wilton, New Salem, Home School

- ▶ Core subject offerings
 - Math for 21st Century
 - Horticulture (applied biology)

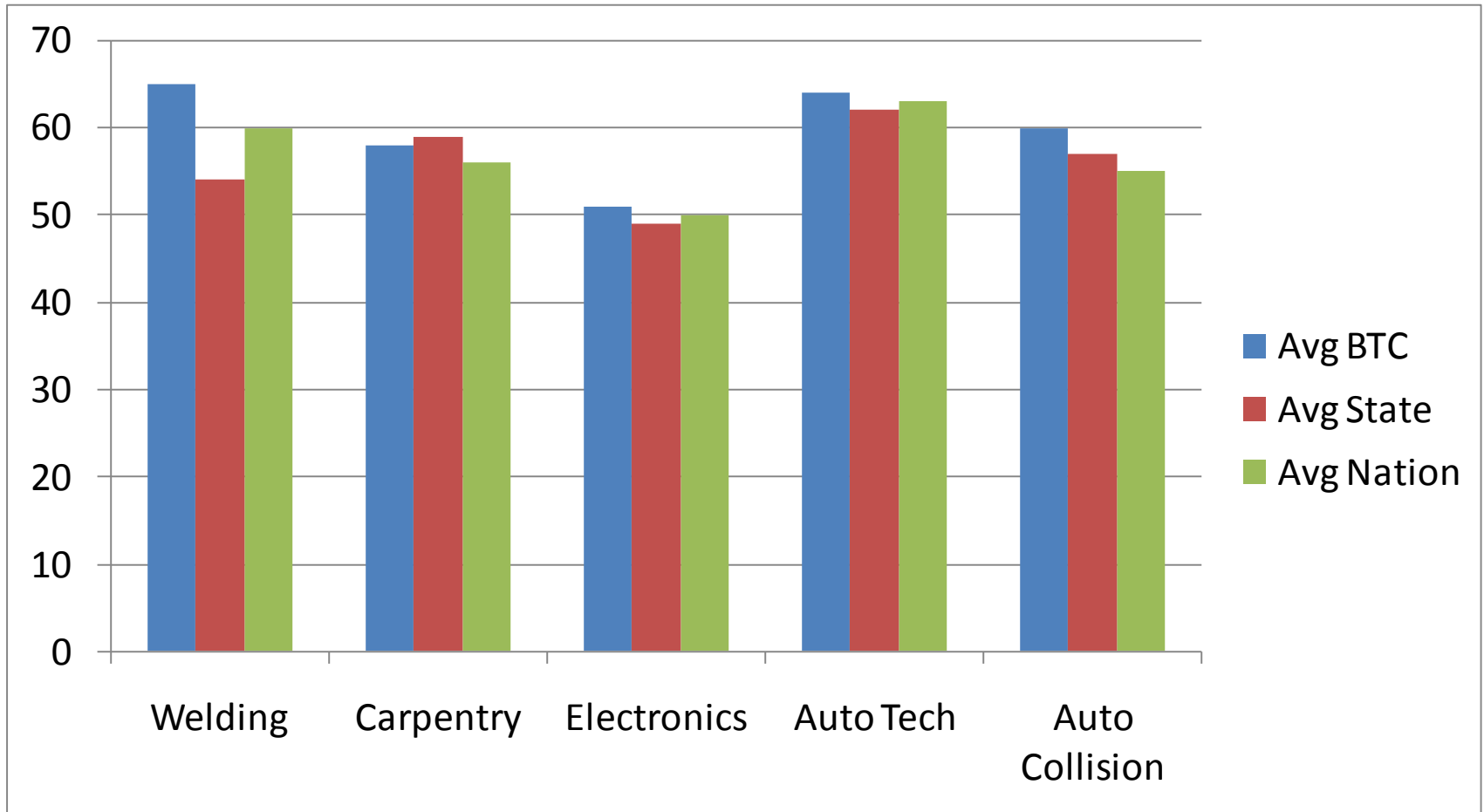
Balanced Scorecard Objectives

- ▶ All Levels of the Organization are Accountable for Student Achievement.
 - Incorporate Secondary and Postsecondary Education Articulation/Dual Credit elements.
 - Develop Programs of Study
 - ▶ Promote a Positive Working and Learning Environment.
 - Construction of Career Academy
 - ▶ Provide Excellence in Instruction Based on the Needs of Individual Students.
 - Align Career and Technical Education standards with Academic Standards.
 - National Skills Assessment exams.
- 

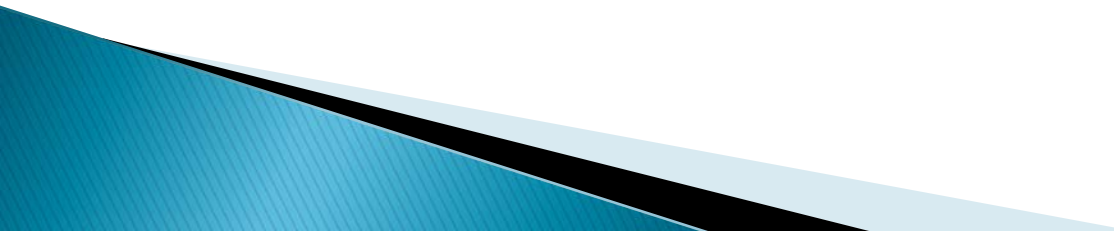
Summary of BSC Objectives

- ▶ Use of industry certification both in improving instruction and signaling that students have acquired a defined set of skills and knowledge.
 - ▶ Use of project-based learning as primary instructional method.
 - ▶ Skills assessment and Work-Keys testing to measure student proficiency.
 - Carl Perkins Act- Requires recipients of federal funds to offer at least one program of study.
- 

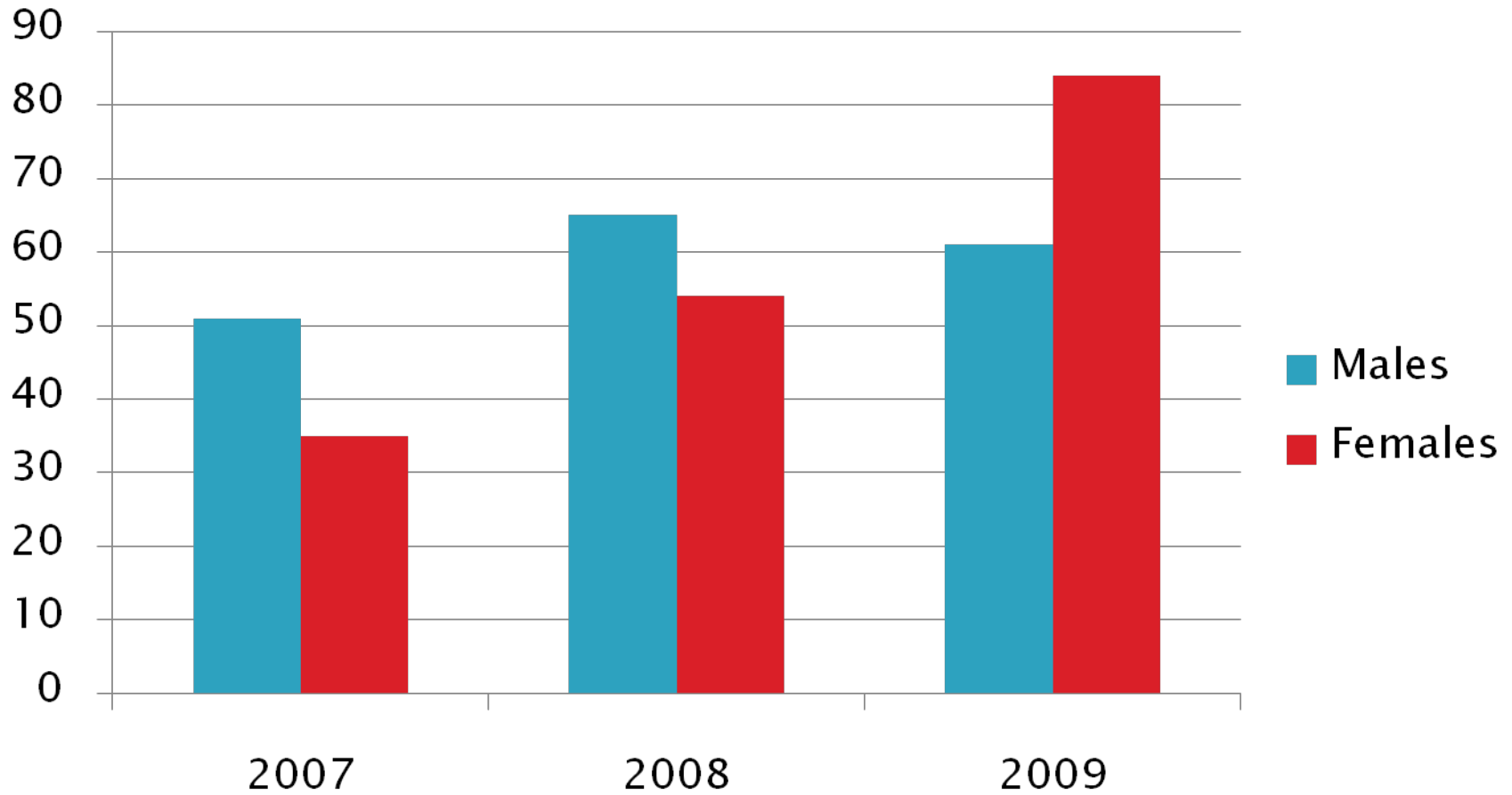
Skills Assessment Testing



Highlights for 2009–2010

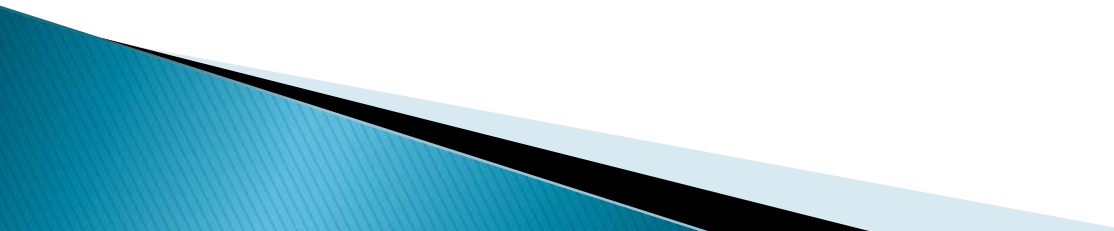
- ▶ Increased the number of articulation agreements with post–secondary institutions.
 - ▶ Construction of Career Academy and remodel of current Technical Center
 - ▶ DPI approval: Horticulture/Botany as applied Biology credit for graduation.
 - ▶ Implementation of the High School of Business as an answer to School Board superintendent goal.
- 

Special Needs

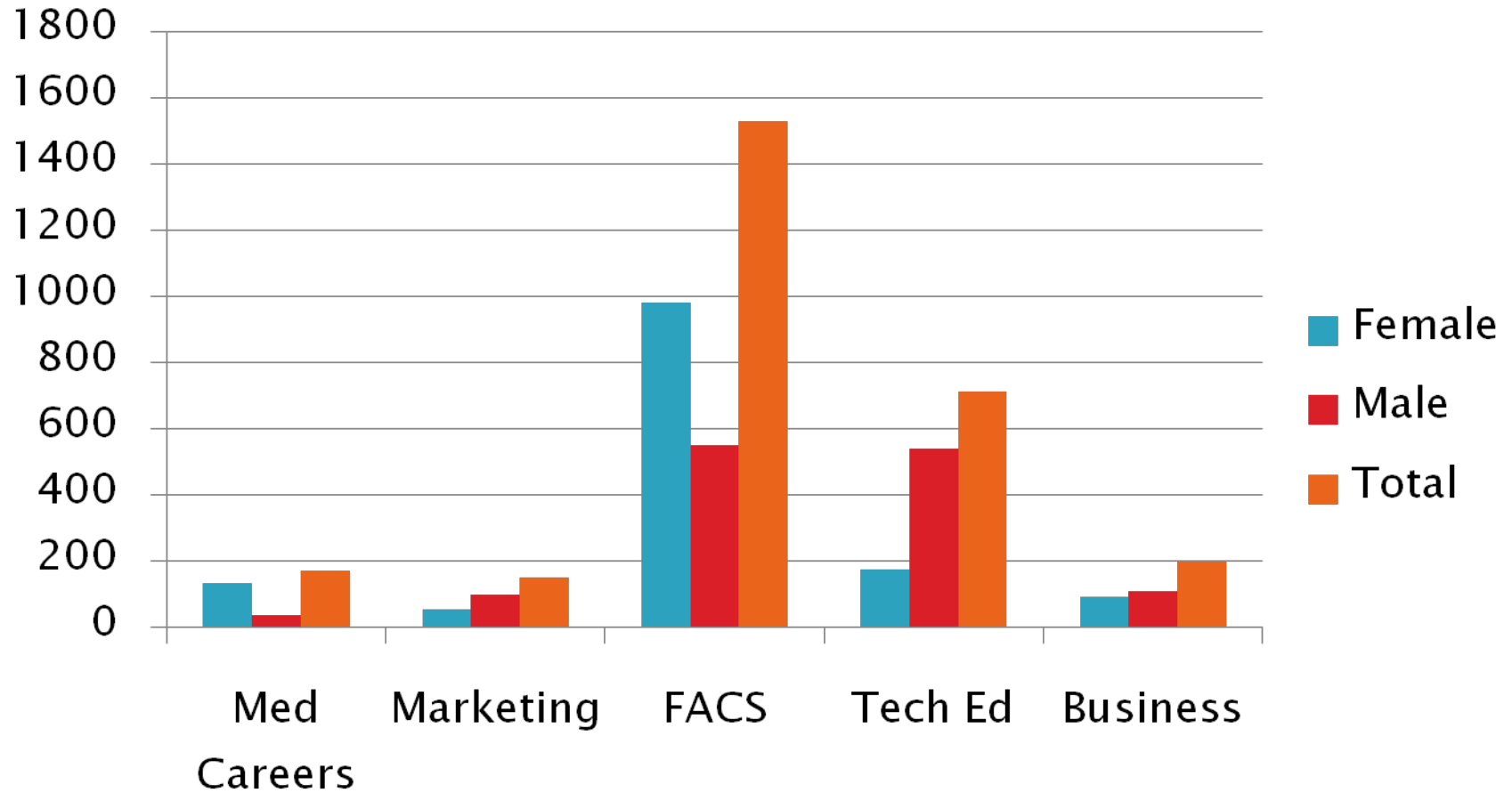


CTE

Next Steps 2010 – 2011

- ▶ Develop flexible class schedule to meet the needs of all students.
 - ▶ Develop Career Readiness Certificate based on Work–Keys skills assessment.
 - ▶ Tutoring
- 

CTE Enrollment (other)



Missouri River (online)

Enrollment

